

INTERMEDIATE BAND SCALES

(In the Keys of Concert Bb, Eb, F, Ab, C, Db)

arr. ANDREW DAVID PERKINS (ASCAP)

♩ = 90

Concert Bb

Musical notation for the Concert Bb scale. The scale is written in 4/4 time on a treble clef staff. It consists of a half-note scale: Bb, Eb, Bb, Eb, Bb, Eb, Bb. The notes are: Bb (quarter), Eb (quarter), Bb (quarter), Eb (quarter), Bb (quarter), Eb (quarter), Bb (quarter).

Concert Eb

Musical notation for the Concert Eb scale. The scale is written in 4/4 time on a treble clef staff. It consists of a half-note scale: Eb, Ab, Bb, Eb, Bb, Ab, Eb. The notes are: Eb (quarter), Ab (quarter), Bb (quarter), Eb (quarter), Bb (quarter), Ab (quarter), Eb (quarter).

Concert F

Musical notation for the Concert F scale. The scale is written in 4/4 time on a treble clef staff. It consists of a half-note scale: F, Bb, F, Bb, F, Bb, F. The notes are: F (quarter), Bb (quarter), F (quarter), Bb (quarter), F (quarter), Bb (quarter), F (quarter).

Concert Ab

Musical notation for the Concert Ab scale. The scale is written in 4/4 time on a treble clef staff. It consists of a half-note scale: Ab, Bb, Db, Eb, Ab, Eb, Db, Bb, Ab. The notes are: Ab (quarter), Bb (quarter), Db (quarter), Eb (quarter), Ab (quarter), Eb (quarter), Db (quarter), Bb (quarter), Ab (quarter).

Concert C

Musical notation for the Concert C scale. The scale is written in 4/4 time on a treble clef staff. It consists of a half-note scale: C, C, C, C, C, C, C, C, C, C, C. The notes are: C (quarter), C (quarter), C (quarter), C (quarter), C (quarter), C (quarter), C (quarter), C (quarter), C (quarter), C (quarter), C (quarter).

Concert Db

Musical notation for the Concert Db scale. The scale is written in 4/4 time on a treble clef staff. It consists of a half-note scale: Db, Eb, Gb, Ab, Bb, Db, Bb, Ab, Gb, Eb, Db. The notes are: Db (quarter), Eb (quarter), Gb (quarter), Ab (quarter), Bb (quarter), Db (quarter), Bb (quarter), Ab (quarter), Gb (quarter), Eb (quarter), Db (quarter).

Oboe

INTERMEDIATE BAND SCALES

(In the Keys of Concert Bb, Eb, F, Ab, C, Db)

arr. ANDREW DAVID PERKINS (ASCAP)

♩ = 90

Concert Bb

Musical notation for the Concert Bb scale in 4/4 time. The scale is written on a treble clef staff with a key signature of two flats (Bb and Eb). The notes are: Bb, Eb, Bb, Eb, Bb, Eb, Bb, Eb, Bb, Eb, Bb, Eb. The notes are grouped in pairs of eighth notes. The first measure starts with a 4-measure rest. The piece ends with a double bar line and a key signature change to three flats.

Concert Eb

Musical notation for the Concert Eb scale in 4/4 time. The scale is written on a treble clef staff with a key signature of three flats (Eb, Bb, and F). The notes are: Eb, Bb, Eb, Bb, Eb, Bb, Eb, Bb, Eb, Bb, Eb, Bb. The notes are grouped in pairs of eighth notes. The first measure starts with a 5-measure rest. The piece ends with a double bar line and a key signature change to two flats.

Concert F

Musical notation for the Concert F scale in 4/4 time. The scale is written on a treble clef staff with a key signature of one flat (F and Bb). The notes are: F, Bb, F, Bb, F, Bb, F, Bb, F, Bb, F, Bb. The notes are grouped in pairs of eighth notes. The first measure starts with a 9-measure rest. The piece ends with a double bar line and a key signature change to two flats.

Concert Ab

Musical notation for the Concert Ab scale in 4/4 time. The scale is written on a treble clef staff with a key signature of four flats (Ab, Bb, Cb, and Eb). The notes are: Ab, Bb, Cb, Eb, Ab, Bb, Cb, Eb, Ab, Bb, Cb, Eb. The notes are grouped in pairs of eighth notes. The first measure starts with a 13-measure rest. The piece ends with a double bar line and a key signature change to three flats.

Concert C

Musical notation for the Concert C scale in 4/4 time. The scale is written on a treble clef staff with a key signature of no sharps or flats (C, F, and Bb). The notes are: C, F, C, F, C, F, C, F, C, F, C, F. The notes are grouped in pairs of eighth notes. The first measure starts with a 17-measure rest. The piece ends with a double bar line and a key signature change to two flats.

Concert Db

Musical notation for the Concert Db scale in 4/4 time. The scale is written on a treble clef staff with a key signature of five flats (Db, Eb, Fb, Gb, and Ab). The notes are: Db, Eb, Fb, Gb, Ab, Bb, Db, Eb, Fb, Gb, Ab, Bb. The notes are grouped in pairs of eighth notes. The first measure starts with a 21-measure rest. The piece ends with a double bar line and a key signature change to three flats.

Bassoon

INTERMEDIATE BAND SCALES

(In the Keys of Concert Bb, Eb, F, Ab, C, Db)

arr. ANDREW DAVID PERKINS (ASCAP)

♩ = 90

Concert Bb

Musical notation for the Concert Bb scale in bass clef, 4/4 time. The scale consists of the following notes: Bb, Eb, Bb, Eb, Bb. The notation includes a key signature of two flats and a 4/4 time signature.

Concert Eb

Musical notation for the Concert Eb scale in bass clef, 4/4 time. The scale consists of the following notes: Eb, Bb, Eb, Bb, Eb, Bb, Eb, Bb, Eb. The notation includes a key signature of three flats and a 4/4 time signature.

Concert F

Musical notation for the Concert F scale in bass clef, 4/4 time. The scale consists of the following notes: Bb, F, C, G, D, A, E, Bb, F. The notation includes a key signature of one flat and a 4/4 time signature.

Concert Ab

Musical notation for the Concert Ab scale in bass clef, 4/4 time. The scale consists of the following notes: Ab, Bb, Db, Eb, Ab, Eb, Db, Bb, Ab. The notation includes a key signature of four flats and a 4/4 time signature.

Concert C

Musical notation for the Concert C scale in bass clef, 4/4 time. The scale consists of the following notes: C, G, D, A, E, B, C. The notation includes a key signature of no sharps or flats and a 4/4 time signature.

Concert Db

Musical notation for the Concert Db scale in bass clef, 4/4 time. The scale consists of the following notes: Db, Eb, Gb, Ab, Bb, Db, Bb, Ab, Gb, Eb, Db. The notation includes a key signature of five flats and a 4/4 time signature.

INTERMEDIATE BAND SCALES

(In the Keys of Concert Bb, Eb, F, Ab, C, Db)

♩ = 90

arr. ANDREW DAVID PERKINS (ASCAP)

Key of C (Concert Bb)

Key of F (Concert Eb)

Key of G (Concert F)

Key of Bb (Concert Ab)

Key of D (Concert C)

Key of Eb (Concert Db)

Bass Clarinet

INTERMEDIATE BAND SCALES

(In the Keys of Concert Bb, Eb, F, Ab, C, Db)

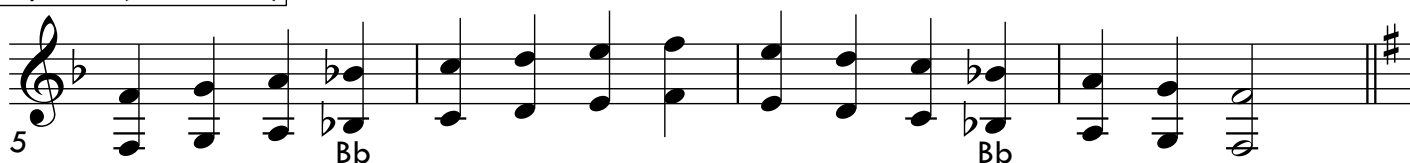
♩ = 90

arr. ANDREW DAVID PERKINS (ASCAP)

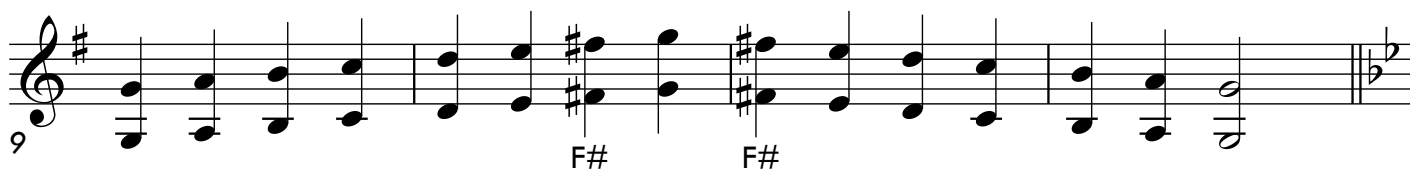
Key of C (Concert Bb)



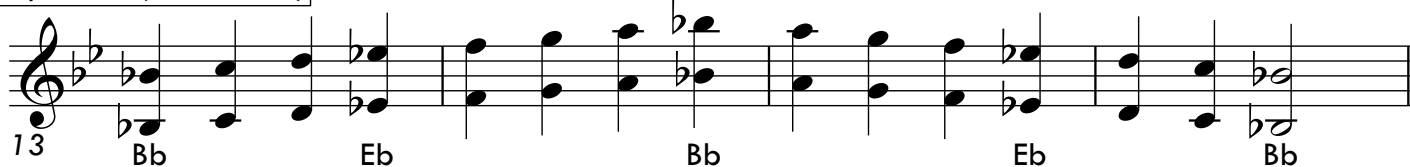
Key of F (Concert Eb)



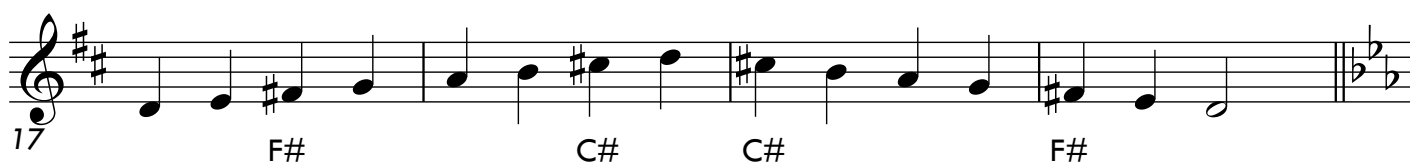
Key of G (Concert F)



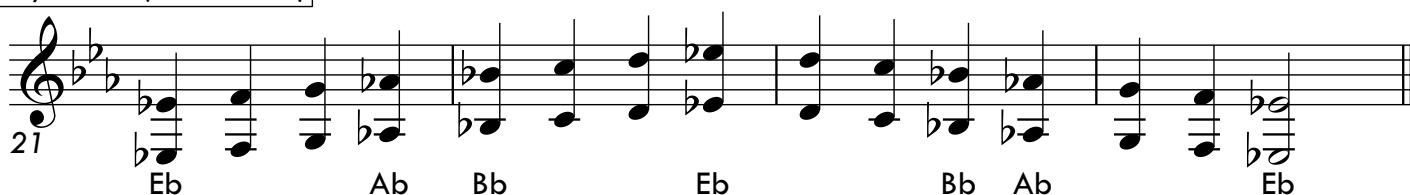
Key of Bb (Concert Ab)



Key of D (Concert C)



Key of Eb (Concert Db)



Alto Sax.

INTERMEDIATE BAND SCALES

(In the Keys of Concert Bb, Eb, F, Ab, C, Db)

♩ = 90

arr. ANDREW DAVID PERKINS (ASCAP)

Key of G (Concert Bb)

Musical notation for the scale of G (Concert Bb) in 4/4 time. The scale is written on a treble clef staff with a key signature of one sharp (F#). The notes are G, A, B, C, D, E, F#, G, F#, E, D, C, B, A, G. The notes F# and G are marked with 'F#' below them.

Key of C (Concert Eb)

Musical notation for the scale of C (Concert Eb) in 4/4 time. The scale is written on a treble clef staff with a key signature of no sharps or flats. The notes are C, D, E, F, G, A, B, C, B, A, G, F, E, D, C. The note C at the beginning is marked with '5' below it.

Key of D (Concert F)

Musical notation for the scale of D (Concert F) in 4/4 time. The scale is written on a treble clef staff with a key signature of two sharps (F# and C#). The notes are D, E, F#, G, A, B, C#, D, C#, B, A, G, F#, E, D. The notes F#, C#, C#, and F# are marked with their respective symbols below them.

Key of F (Concert Ab)

Musical notation for the scale of F (Concert Ab) in 4/4 time. The scale is written on a treble clef staff with a key signature of two flats (Bb and Eb). The notes are F, G, Ab, Bb, C, D, Eb, F, Eb, D, C, Bb, Ab, G, F. The notes Bb and Eb are marked with their respective symbols below them.

Key of A (Concert C)

Musical notation for the scale of A (Concert C) in 4/4 time. The scale is written on a treble clef staff with a key signature of three sharps (F#, C#, and G#). The notes are A, B, C#, D, E, F#, G#, A, G#, F#, E, D, C#, B, A. The notes C#, F#, G#, G#, F#, and C# are marked with their respective symbols below them.

Key of Bb (Concert Db)

Musical notation for the scale of Bb (Concert Db) in 4/4 time. The scale is written on a treble clef staff with a key signature of three flats (Bb, Eb, and Ab). The notes are Bb, C, Eb, F, G, Ab, Bb, Ab, G, F, Eb, C, Bb. The notes Bb, Bb, Eb, and Bb are marked with their respective symbols below them.

Tenor Sax.

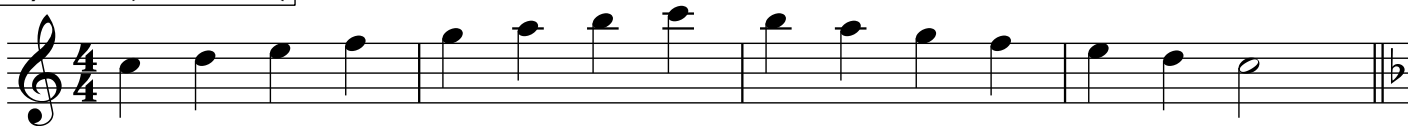
INTERMEDIATE BAND SCALES

(In the Keys of Concert Bb, Eb, F, Ab, C, Db)

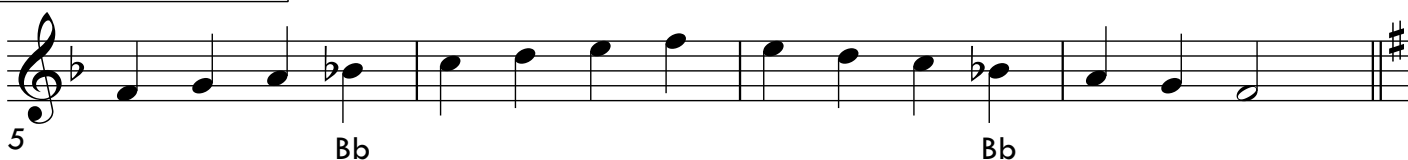
♩ = 90

arr. ANDREW DAVID PERKINS (ASCAP)

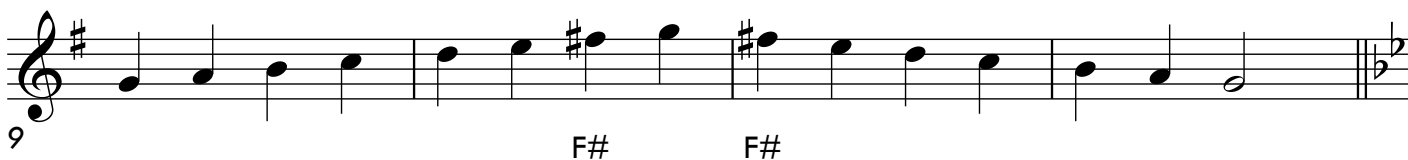
Key of C (Concert Bb)



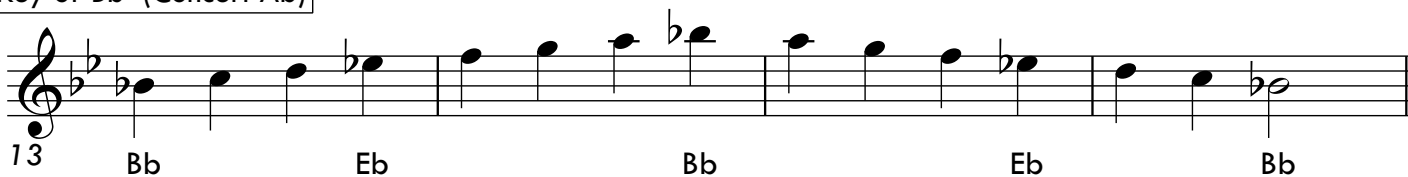
Key of F (Concert Eb)



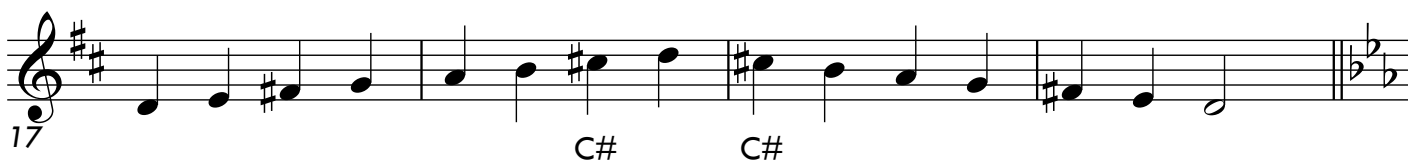
Key of G (Concert F)



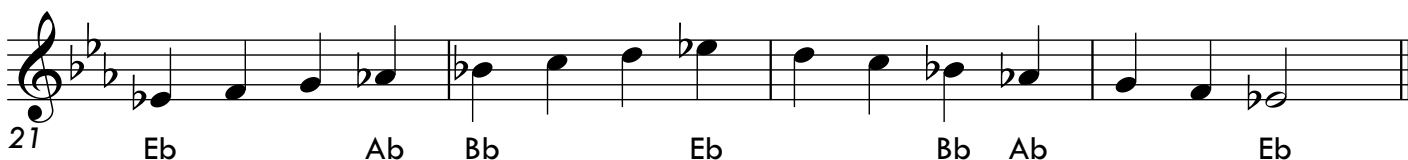
Key of Bb (Concert Ab)



Key of D (Concert C)



Key of Eb (Concert Db)



Baritone Sax.

INTERMEDIATE BAND SCALES

(In the Keys of Concert Bb, Eb, F, Ab, C, Db)

♩ = 90

arr. ANDREW DAVID PERKINS (ASCAP)

Key of G (Concert Bb)

Musical notation for the scale of G (Concert Bb) in 4/4 time. The scale is written on a treble clef staff with a key signature of one sharp (F#). The notes are G, A, B, C, D, E, F#, G, F#, E, D, C, B, A, G. The notes F# and G are marked with 'F#' below them.

Key of C (Concert Eb)

Musical notation for the scale of C (Concert Eb) in 4/4 time. The scale is written on a treble clef staff with a key signature of no sharps or flats. The notes are C, D, E, F, G, A, B, C, B, A, G, F, E, D, C. The note C is marked with '5' below it.

Key of D (Concert F)

Musical notation for the scale of D (Concert F) in 4/4 time. The scale is written on a treble clef staff with a key signature of two sharps (F#, C#). The notes are D, E, F#, G, A, B, C#, D, C#, B, A, G, F#, E, D. The notes F#, C#, C#, and F# are marked with '9', 'F#', 'C#', 'C#', and 'F#' below them.

Key of F (Concert Ab)

Musical notation for the scale of F (Concert Ab) in 4/4 time. The scale is written on a treble clef staff with a key signature of two flats (Bb, Eb). The notes are F, G, Ab, Bb, C, D, Eb, F, Eb, D, C, Bb, Ab, G, F. The notes Bb and Eb are marked with '13', 'Bb', and 'Bb' below them.

Key of A (Concert C)

Musical notation for the scale of A (Concert C) in 4/4 time. The scale is written on a treble clef staff with a key signature of three sharps (F#, C#, G#). The notes are A, B, C#, D, E, F#, G#, A, G#, F#, E, D, C#, B, A. The notes C#, F#, G#, G#, F#, and C# are marked with '17', 'C#', 'F# G#', 'G# F#', and 'C#' below them.

Key of Bb (Concert Db)

Musical notation for the scale of Bb (Concert Db) in 4/4 time. The scale is written on a treble clef staff with a key signature of three flats (Bb, Eb, Ab). The notes are Bb, C, Eb, F, G, Ab, Bb, A, G, F, Eb, D, Bb, C, Bb. The notes Bb, Eb, Bb, Eb, and Bb are marked with '21', 'Bb', 'Eb', 'Bb', 'Eb', and 'Bb' below them.

Trumpets

INTERMEDIATE BAND SCALES

(In the Keys of Concert Bb, Eb, F, Ab, C, Db)

♩ = 90

arr. ANDREW DAVID PERKINS (ASCAP)

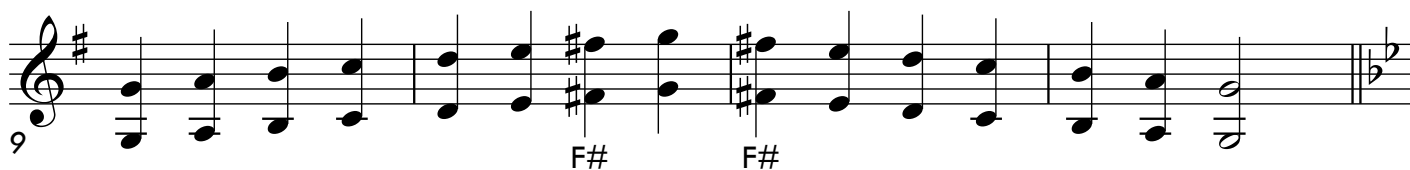
Key of C (Concert Bb)



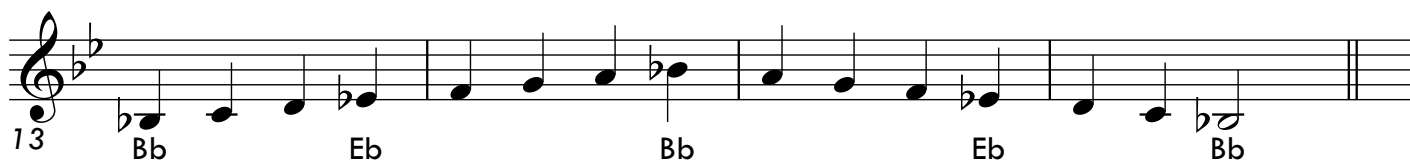
Key of F (Concert Eb)



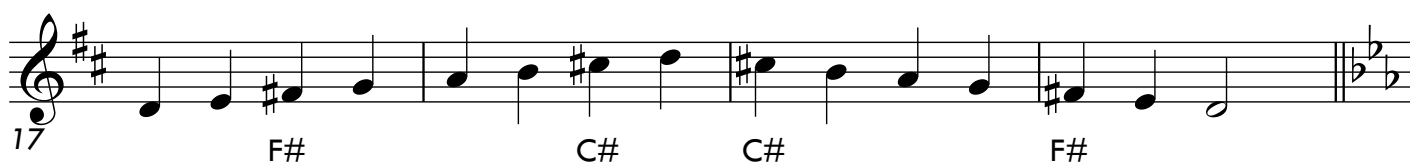
Key of G (Concert F)



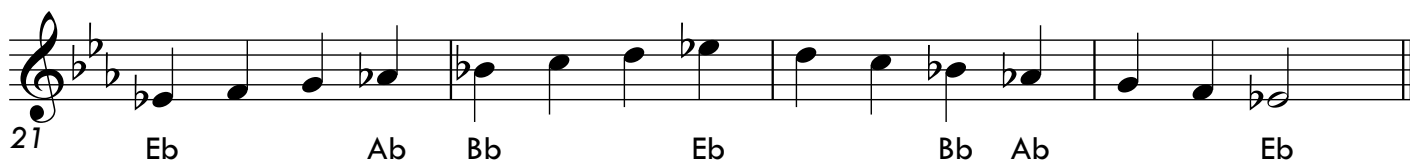
Key of Bb (Concert Ab)



Key of D (Concert C)



Key of Eb (Concert Db)



Horns in F

INTERMEDIATE BAND SCALES

(In the Keys of Concert Bb, Eb, F, Ab, C, Db)

♩ = 90

arr. ANDREW DAVID PERKINS (ASCAP)

Key of F (Concert Bb)

5 Bb Bb

Key of Bb (Concert Eb)

5 Bb Eb Bb Eb Bb

Key of C (Concert F)

9

Key of Eb (Concert Ab)

13

Key of G (Concert C)

17 F# F#

Key of Ab (Concert Db)

21 Ab Bb Db Eb Ab Eb Db Bb Ab

Trombones

INTERMEDIATE BAND SCALES

(In the Keys of Concert Bb, Eb, F, Ab, C, Db)

♩ = 90

arr. ANDREW DAVID PERKINS (ASCAP)

Concert Bb

Musical notation for the Concert Bb scale in bass clef, 4/4 time. The scale consists of the following notes: Bb, Eb, Bb, Eb, Bb. The notes are written on a single staff with stems and flags. The key signature has two flats (Bb and Eb).

Concert Eb

Musical notation for the Concert Eb scale in bass clef, 4/4 time. The scale consists of the following notes: Eb, Ab, Bb, Eb, Bb, Ab, Eb. The notes are written on a single staff with stems and flags. The key signature has three flats (Eb, Ab, and Bb).

Concert F

Musical notation for the Concert F scale in bass clef, 4/4 time. The scale consists of the following notes: F, Bb, F, Bb, F, Bb, F. The notes are written on a single staff with stems and flags. The key signature has two flats (Bb and F).

Concert Ab

Musical notation for the Concert Ab scale in bass clef, 4/4 time. The scale consists of the following notes: Ab, Bb, Db, Eb, Ab, Eb, Db, Bb, Ab. The notes are written on a single staff with stems and flags. The key signature has four flats (Ab, Bb, Db, and Eb).

Concert C

Musical notation for the Concert C scale in bass clef, 4/4 time. The scale consists of the following notes: C, G, C, G, C, G, C. The notes are written on a single staff with stems and flags. The key signature has no flats (C).

Concert Db

Musical notation for the Concert Db scale in bass clef, 4/4 time. The scale consists of the following notes: Db, Eb, Gb, Ab, Bb, Db, Bb, Ab, Gb, Eb, Db. The notes are written on a single staff with stems and flags. The key signature has five flats (Db, Eb, Gb, Ab, and Bb).

Euph T.C.

INTERMEDIATE BAND SCALES

(In the Keys of Concert Bb, Eb, F, Ab, C, Db)

♩ = 90

arr. ANDREW DAVID PERKINS (ASCAP)

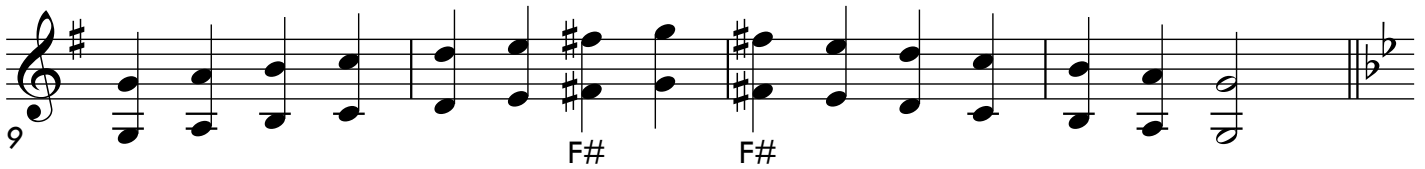
Key of C (Concert Bb)



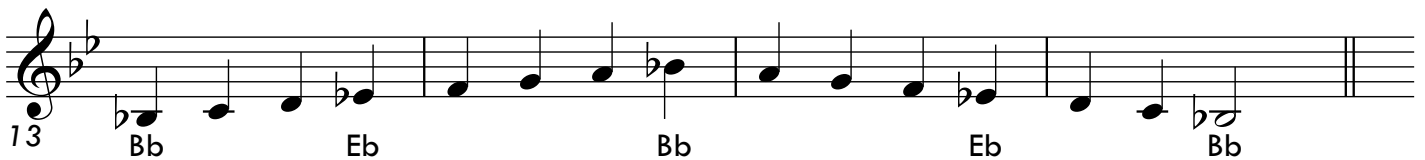
Key of F (Concert Eb)



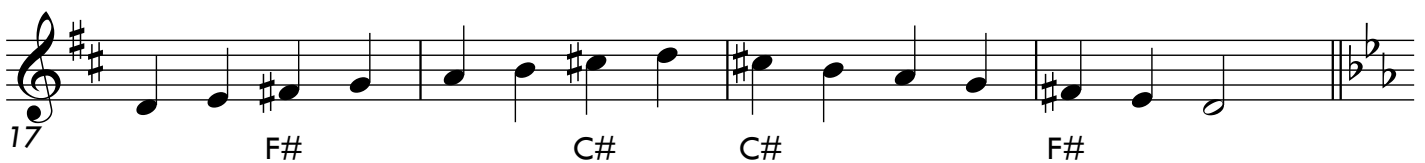
Key of G (Concert F)



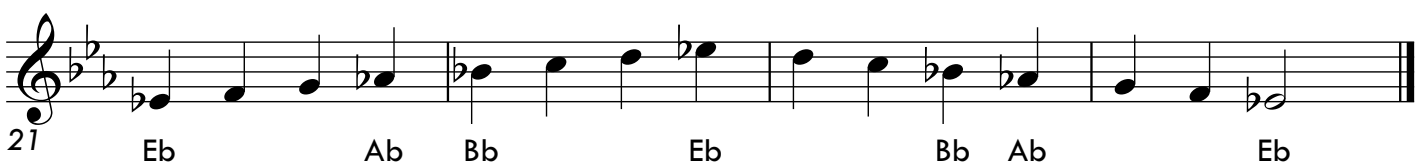
Key of Bb (Concert Ab)



Key of D (Concert C)



Key of Eb (Concert Db)



Euphonium

INTERMEDIATE BAND SCALES

(In the Keys of Concert Bb, Eb, F, Ab, C, Db)

♩ = 90

arr. ANDREW DAVID PERKINS (ASCAP)

Concert Bb

Musical notation for the Concert Bb scale in bass clef, 4/4 time. The scale consists of the following notes: Bb, Eb, Bb, Eb, Bb. The notation includes a key signature of two flats and a 4/4 time signature.

Concert Eb

Musical notation for the Concert Eb scale in bass clef, 4/4 time. The scale consists of the following notes: Eb, Ab, Bb, Eb, Bb, Ab, Eb. The notation includes a key signature of three flats and a 4/4 time signature.

Concert F

Musical notation for the Concert F scale in bass clef, 4/4 time. The scale consists of the following notes: Bb, F, Bb, F, Bb, F, Bb, F. The notation includes a key signature of one flat and a 4/4 time signature.

Concert Ab

Musical notation for the Concert Ab scale in bass clef, 4/4 time. The scale consists of the following notes: Ab, Bb, Db, Eb, Ab, Eb, Db, Bb, Ab. The notation includes a key signature of four flats and a 4/4 time signature.

Concert C

Musical notation for the Concert C scale in bass clef, 4/4 time. The scale consists of the following notes: C, G, C, G, C, G, C, G. The notation includes a key signature of no sharps or flats and a 4/4 time signature.

Concert Db

Musical notation for the Concert Db scale in bass clef, 4/4 time. The scale consists of the following notes: Db, Eb, Gb, Ab, Bb, Db, Bb, Ab, Gb, Eb, Db. The notation includes a key signature of five flats and a 4/4 time signature.

Tuba

INTERMEDIATE BAND SCALES

(In the Keys of Concert Bb, Eb, F, Ab, C, Db)

♩ = 90

arr. ANDREW DAVID PERKINS (ASCAP)

Concert Bb

Musical notation for the Concert Bb scale in bass clef, 4/4 time. The scale consists of 8 notes: Bb, Eb, Bb, Eb, Bb, Eb, Bb, Eb. The notes are written as quarter notes with stems pointing down. The key signature has two flats (Bb and Eb).

Concert Eb

Musical notation for the Concert Eb scale in bass clef, 4/4 time. The scale consists of 12 notes: Eb, Ab, Bb, Eb, Bb, Ab, Eb, Bb, Ab, Eb, Bb, Ab. The notes are written as quarter notes with stems pointing down. The key signature has three flats (Eb, Ab, Bb). The first measure is marked with a '5'.

Concert F

Musical notation for the Concert F scale in bass clef, 4/4 time. The scale consists of 10 notes: F, Bb, F, Bb, F, Bb, F, Bb, F, Bb. The notes are written as quarter notes with stems pointing down. The key signature has two flats (Bb and F). The first measure is marked with a '9'.

Concert Ab

Musical notation for the Concert Ab scale in bass clef, 4/4 time. The scale consists of 12 notes: Ab, Bb, Db, Eb, Ab, Eb, Db, Bb, Ab, Bb, Db, Eb. The notes are written as quarter notes with stems pointing down. The key signature has four flats (Ab, Bb, Db, Eb). The first measure is marked with a '13'.

Concert C

Musical notation for the Concert C scale in bass clef, 4/4 time. The scale consists of 10 notes: C, F, C, F, C, F, C, F, C, F. The notes are written as quarter notes with stems pointing down. The key signature has no flats. The first measure is marked with a '17'.

Concert Db

Musical notation for the Concert Db scale in bass clef, 4/4 time. The scale consists of 12 notes: Db, Eb, Gb, Ab, Bb, Db, Bb, Ab, Gb, Eb, Db, Ab. The notes are written as quarter notes with stems pointing down. The key signature has five flats (Db, Eb, Gb, Ab, Bb). The first measure is marked with a '21'.